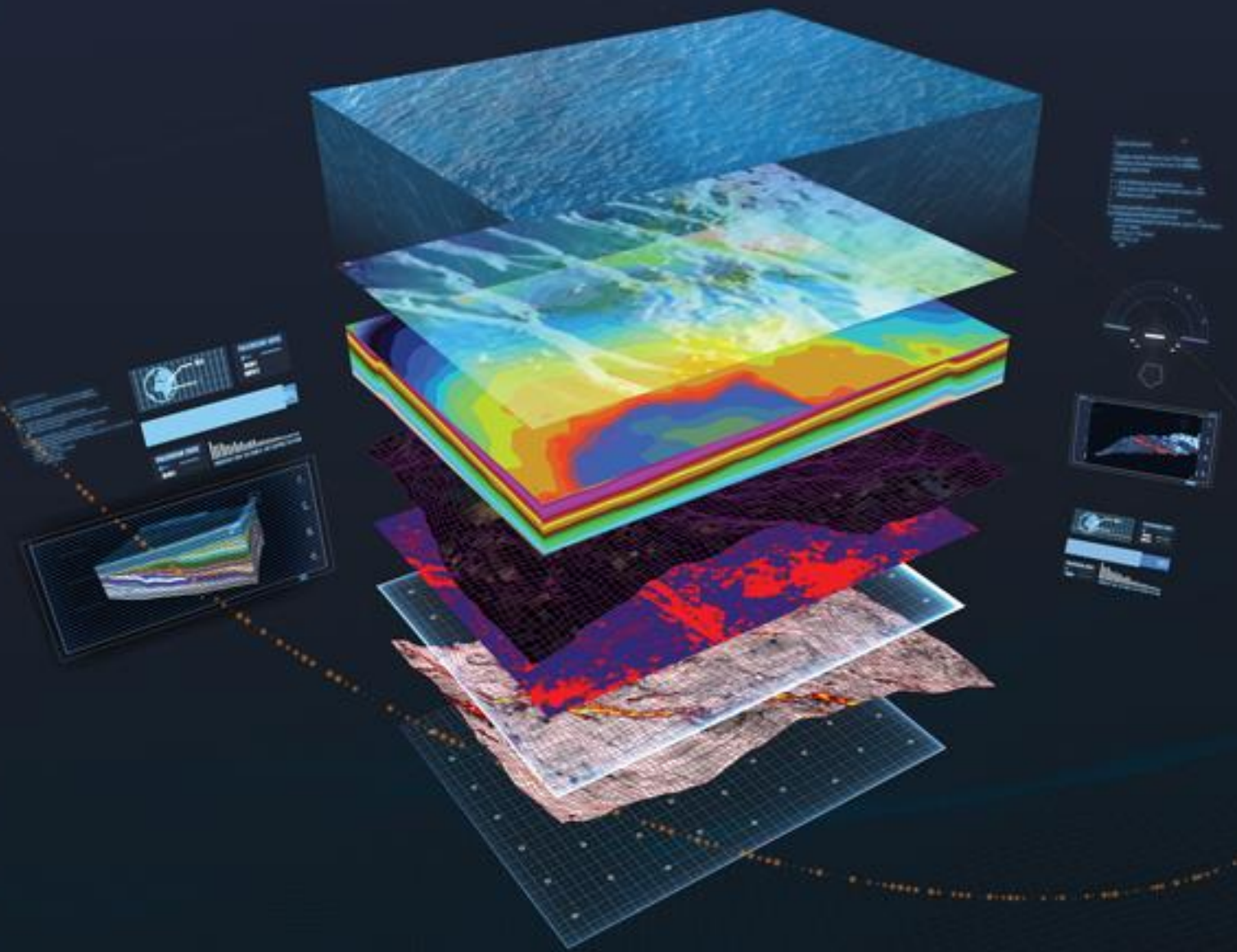


PALEOSCAN™ 2020

Node Locked Licence

Installation Procedure



Global Seismic Interpretation Software



ELIIS S.A.S.

3, rue Jean Monnet
34830 Clapiers
FRANCE

Web: www.eliis.fr
email: support@eliis.fr

Tel.: +33 (0) 4.67.41.31.16
Support: +33 (0) 4.30.96.61.33

Table of Contents

I. Request an Evaluation License	4
II. Retrieving the Host ID and the Host Name of the local machine	5
1. From PaleoScan™	5
2. From Windows.....	7
III. Activation.....	8
1. Select the local license from PaleoScan™	8
2. Start PaleoScan™	10
a. If local server value is set to No.....	10
b. If local server value is set to Yes.....	10
IV. Common issues	12
1. The local license server does not start.....	12
a. Define a custom port	12
b. Another server is running	12

I. Request an Evaluation License

First, install PaleoScan™ and launch the application in order to get the machine's Host ID and Host Name required by Eliis to generate a License.

Then, follow the [chapter II](#) to retrieve the information and send them to Eliis at license@eliis.fr

Remark: these values can be directly sent to the Eliis team using the generated email (see [chapter II. 1](#)).

Once you received the license file, please follow the instructions described in the [chapter III](#) to activate your license.

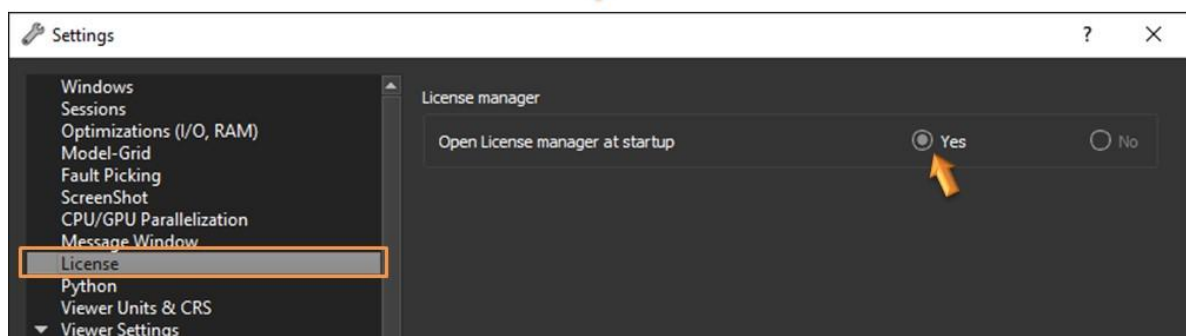
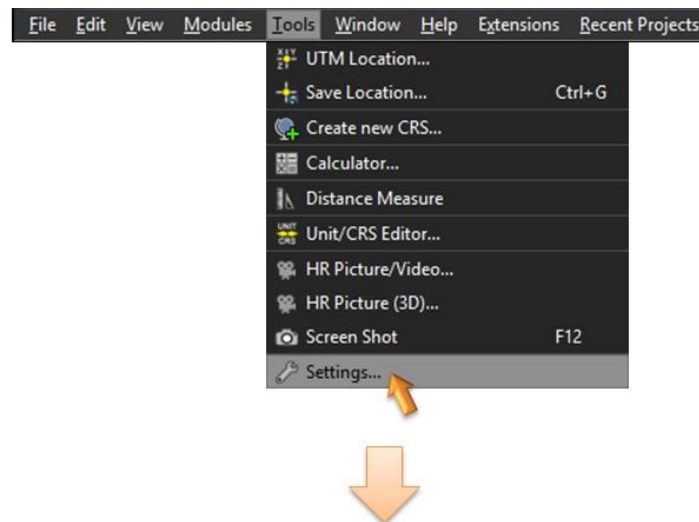
II. Retrieving the Host ID and the Host Name of the local machine

The host ID of the machine as well as the Host Name have to be communicated to Eliis at license@eliis.fr to generate the license file.

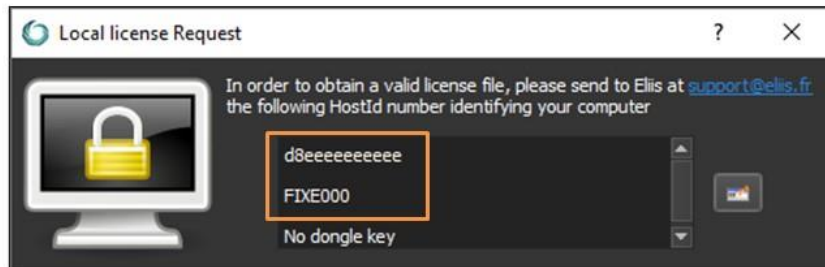
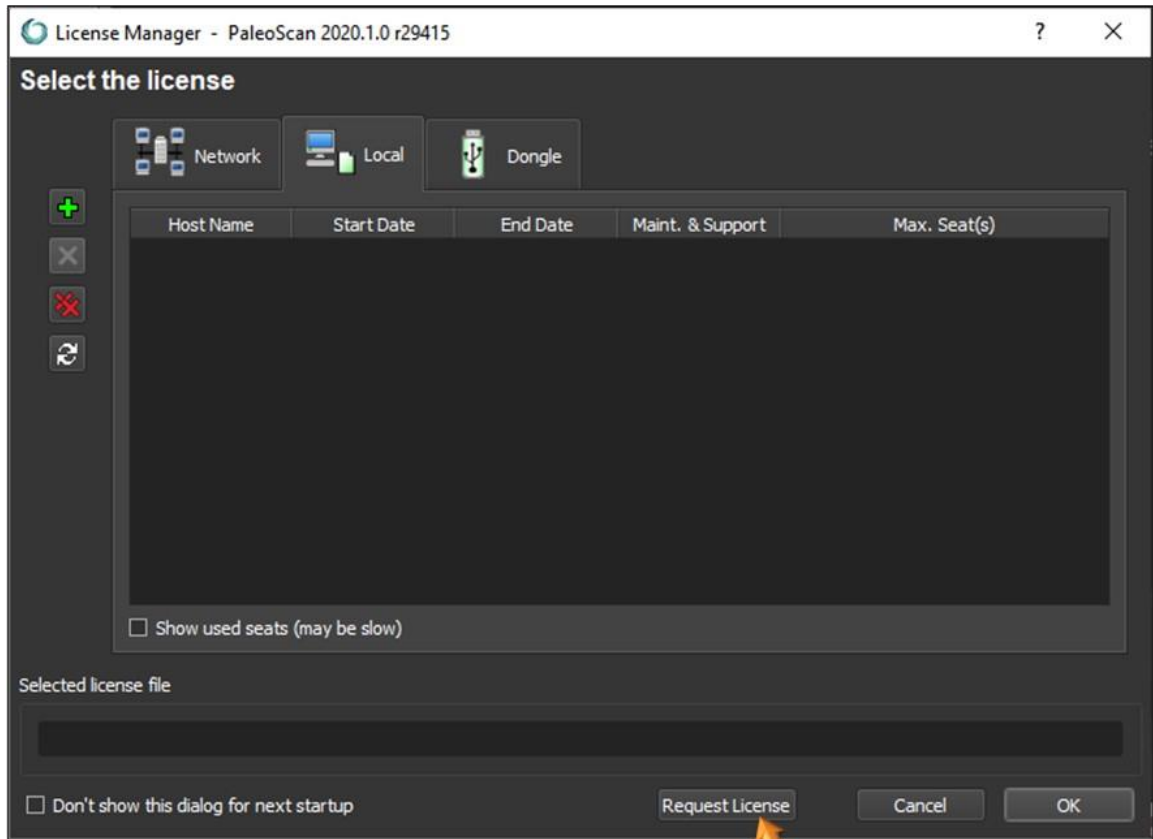
Two solutions are available in order to get access to these values

1. From PaleoScan™

- Open PaleoScan™, the License Manager should appear. If the License Manager does not present itself, the user must force its opening from the PaleoScan™ settings:
 - From the PaleoScan™ **Tools** file menu, go to **Settings** and click on the **License** section. Finally check the option to **Open the License Manager at start-up**:



- Close PaleoScan™ and restart the software: The License Manager should present itself.
- In the License Manager, click on the **Request License** button in order to get the machine's local Host ID and Host Name:



2. From Windows

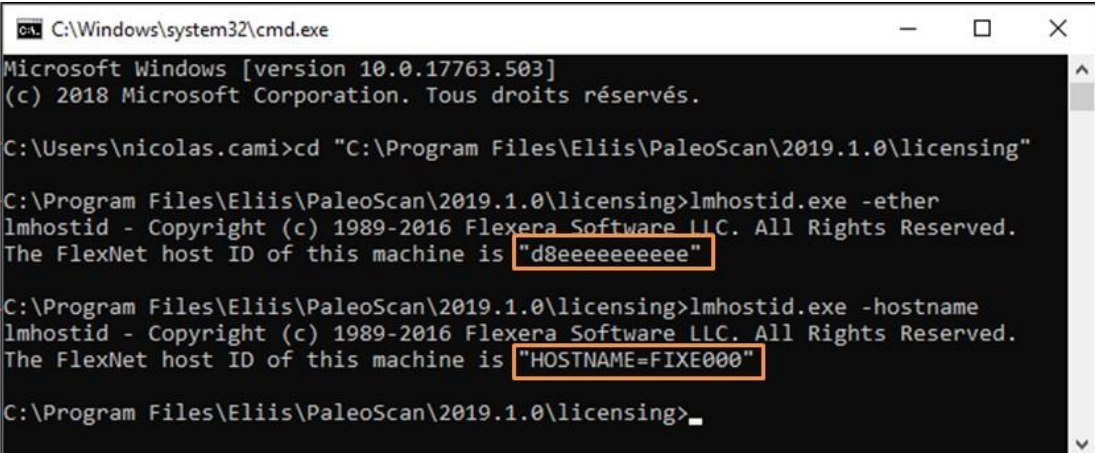
Both the Host Name and the Host ID can be retrieved using the program **lmhostid.exe** located inside the **licensing** folder in the PaleoScan™ installation folder.

From a **Windows Command Prompt** (press *Windows+R* and enter *cmd*):

1. Go into the PaleoScan™ installation folder. Copy and paste this path in the command window following this template:

cd "C:\Program Files\Eliis\PaleoScan\2019.1.0\licensing"

2. In order to get the Host ID, enter: **lmhostid.exe -ether**
3. In order to get the Host Name, enter: **lmhostid.exe -hostname**



The screenshot shows a Windows Command Prompt window with the following text:

```
C:\Windows\system32\cmd.exe
Microsoft Windows [version 10.0.17763.503]
(c) 2018 Microsoft Corporation. Tous droits réservés.

1 C:\Users\nicolas.cami>cd "C:\Program Files\Eliis\PaleoScan\2019.1.0\licensing"
2 C:\Program Files\Eliis\PaleoScan\2019.1.0\licensing>lmhostid.exe -ether
lmhostid - Copyright (c) 1989-2016 Flexera Software LLC. All Rights Reserved.
The FlexNet host ID of this machine is "d8eeeeeeee"
3 C:\Program Files\Eliis\PaleoScan\2019.1.0\licensing>lmhostid.exe -hostname
lmhostid - Copyright (c) 1989-2016 Flexera Software LLC. All Rights Reserved.
The FlexNet host ID of this machine is "HOSTNAME=FIXE000"


C:\Program Files\Eliis\PaleoScan\2019.1.0\licensing>_
```

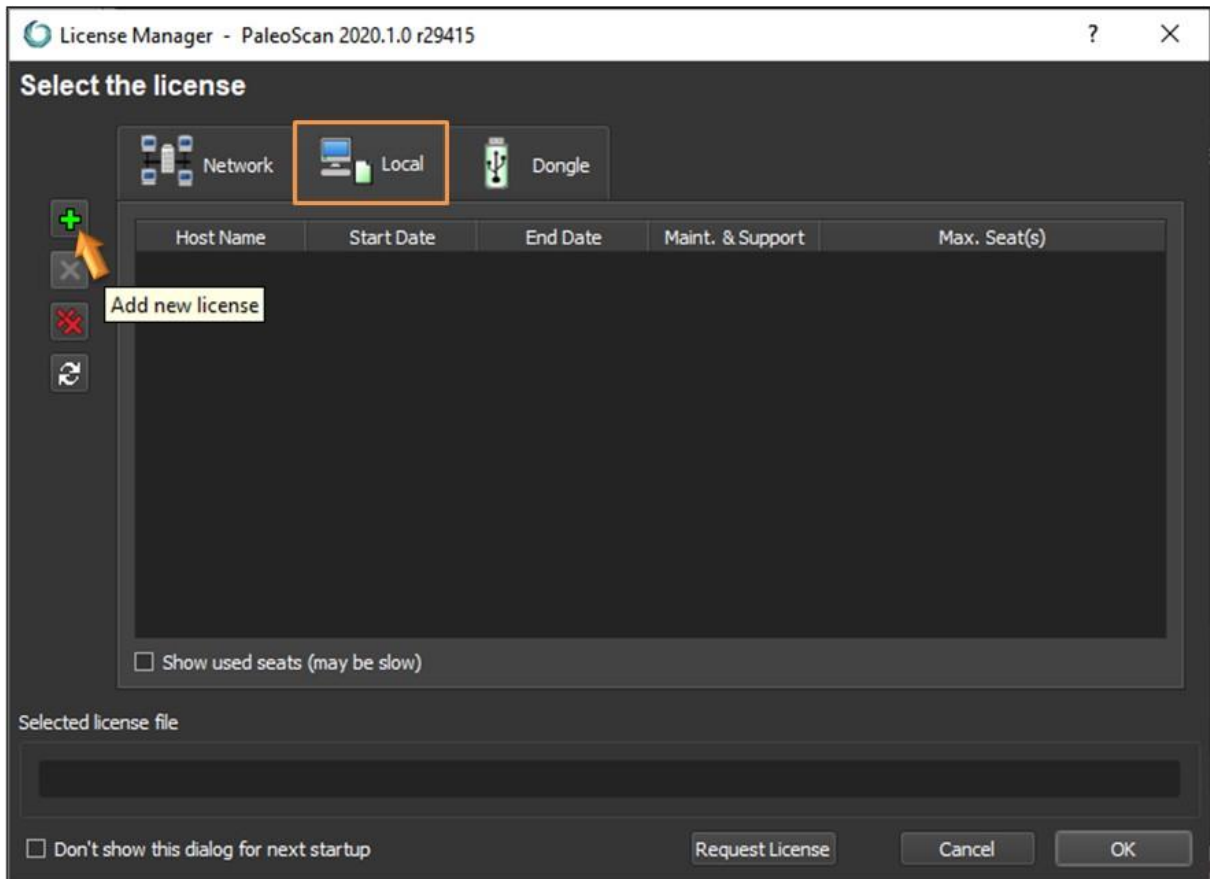
Three orange boxes with numbers 1, 2, and 3 are placed to the left of the command prompt, with arrows pointing to the corresponding lines of text.

III. Activation

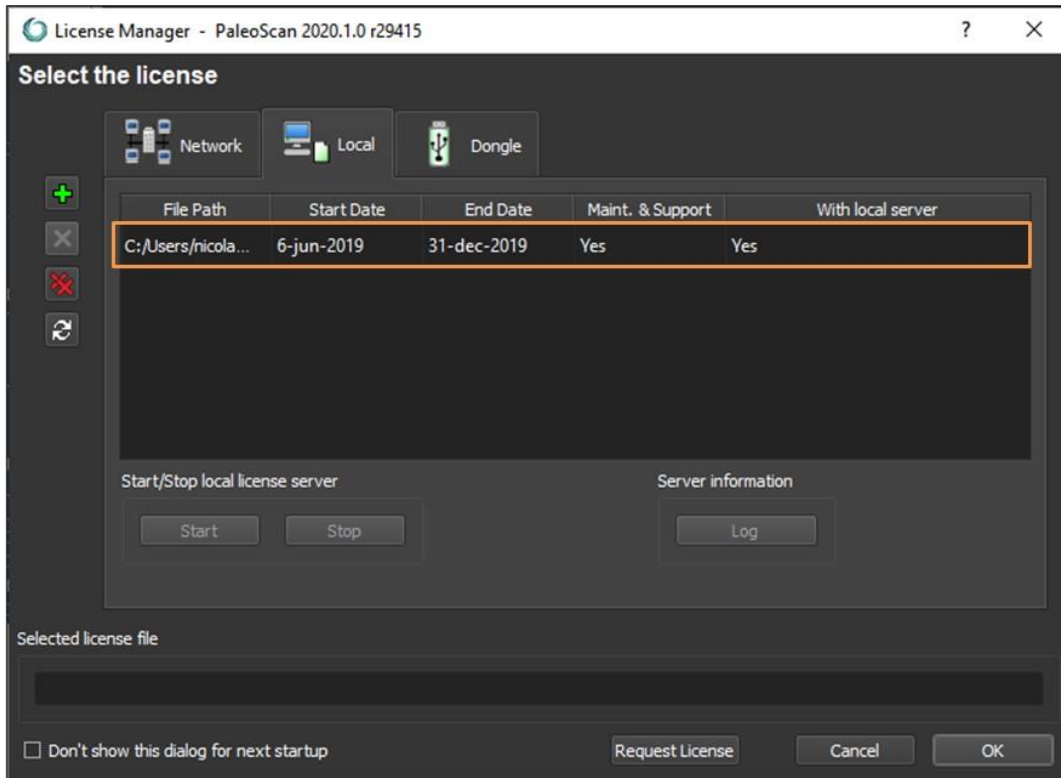
At this stage, it is assumed that a valid license file has been received from the Eliis team.

1. Select the local license from PaleoScan™

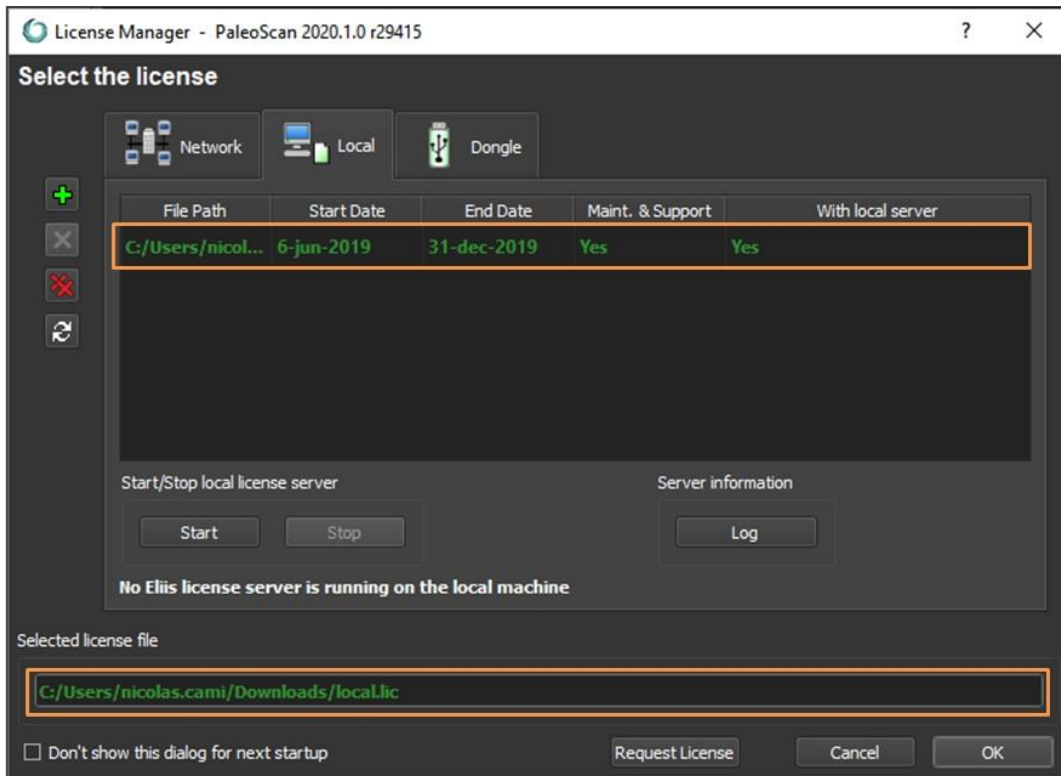
- Select the **Local** tab.
- Select the local license file using the  icon called **Add new license**:



- If the selected license is valid, a new row displaying the license details is inserted inside the license file list:



- Once the license file is displayed in the license list, it must be selected by double clicking on it:



2. Start PaleoScan™

Depending on the local license type, a local server may have to be run.

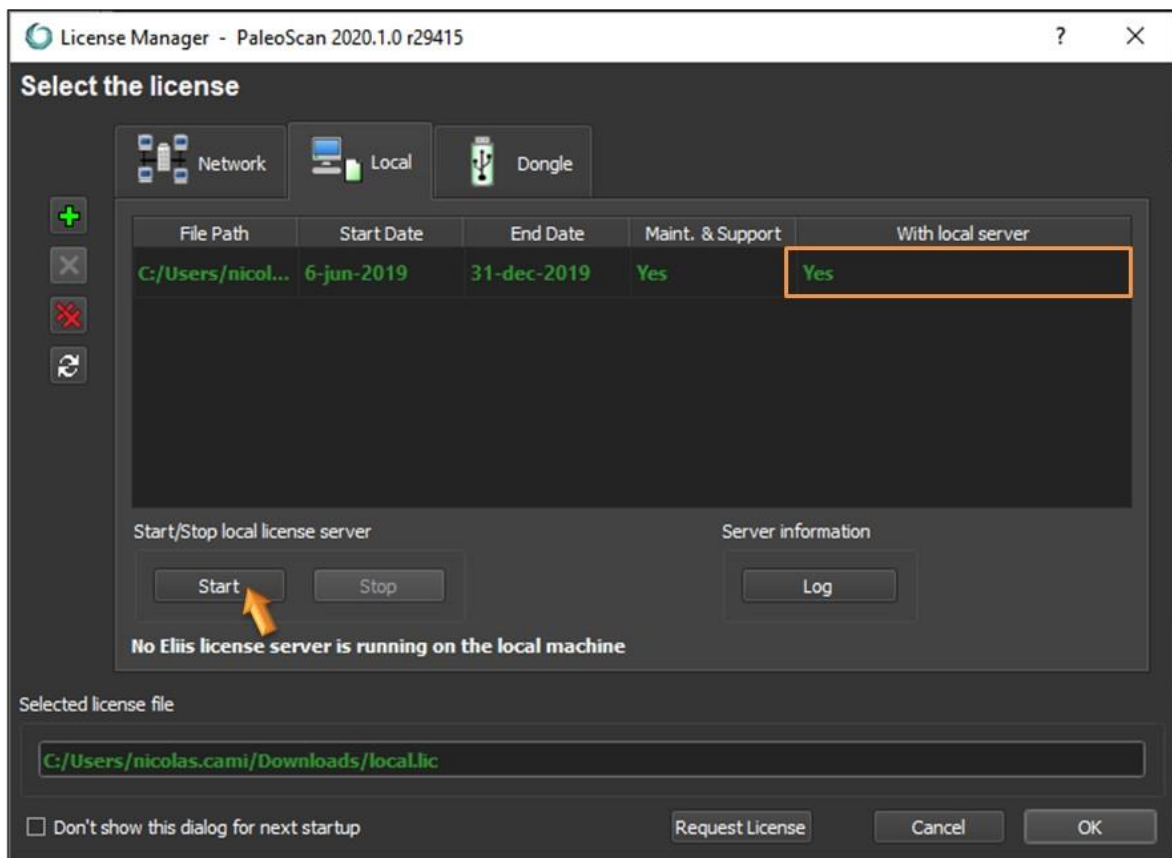
This information is displayed in the column named **with local server** from the license list table.

a. If local server value is set to No

- No local server is required: Click on the **OK** button to start the software using the selected license.

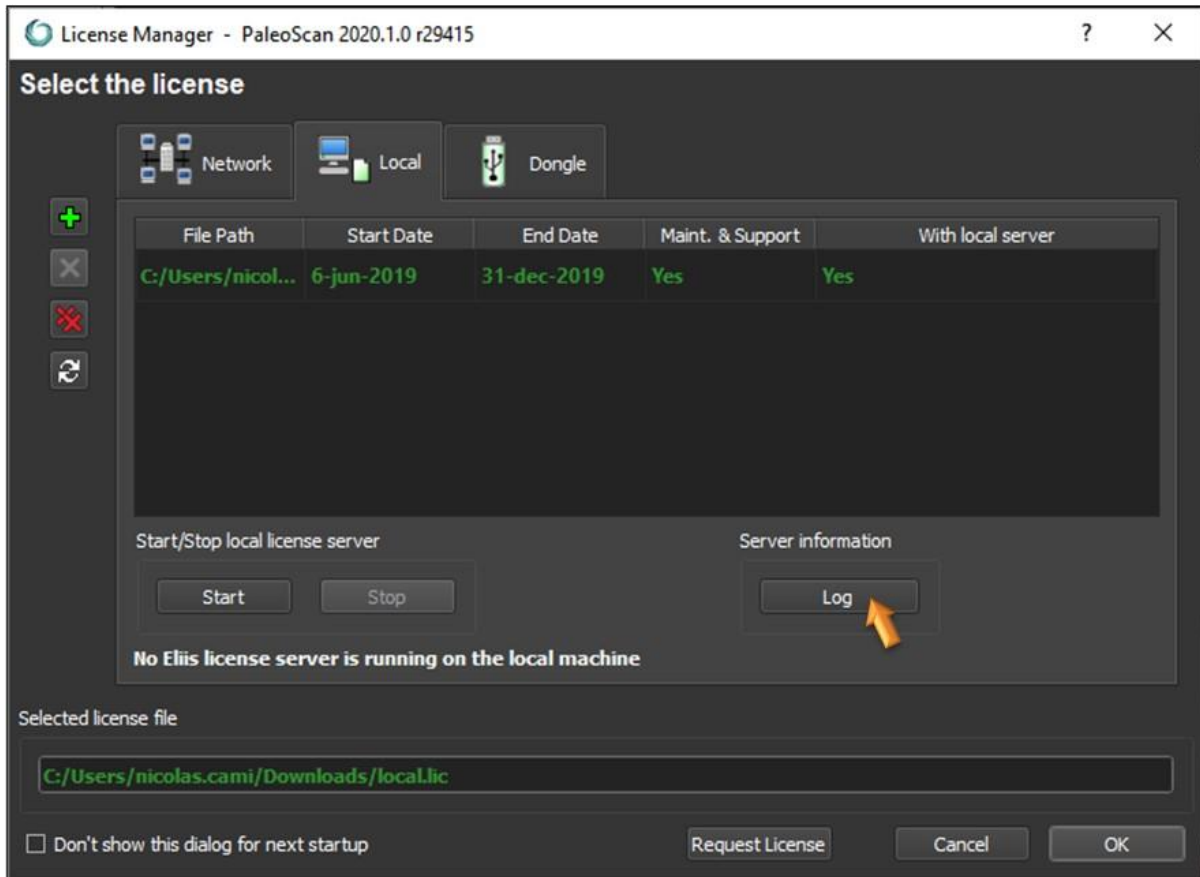
b. If local server value is set to Yes

- A local server is required: If no local server is running (message *No Eliis license server is running on the local machine* is shown), click on the **Start** button:



- The local server state message must have been updated to ***Eliis license server is running.***
- Click on the **OK** button to start the software using the selected license.

Remark: If the local server does not start, please read the [common issues](#) chapter. The server log file may also help. Click on the **Log** button to open it:



Note: Activation may require administration rights.

IV. Common issues

1. The local license server does not start

a. Define a custom port

If there are other software based on Flexera software licensing system running on the machine, there may be some ports conflict. To avoid such issue, edit the license file and specify a custom (unused) port number (from 27000-27009):

```
SERVER alpha 50eeeeeeeeee 27005  
VENDOR eliis  
FEATURE [...]
```

b. Another server is running

There may be unexpected lmgrd.exe processes or eliis.exe running. Close PaleoScan™, kill all **lmgrd.exe** processes and restart the local license server.